

# OptiScout

Version 7

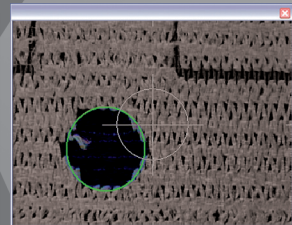
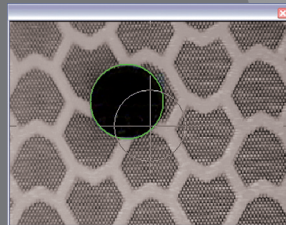


Digital Finishing Software Suite with inbuilt, touchscreen-capable Workflow-Manager, sophisticated Video Marks and Object Recognition

## Highlights ...

### Optimized Video Mark and Object Recognition

The video mark recognition was extended by a mode for the detection of material and object edges. The internal image processing has been extended with new filters that make it possible to use a wider range of objects for alignment. With the new filters you can achieve significantly better results on textured materials, such as printed textiles.



OptiScout recognizes different materials  
left: retroreflective material | right: woven material

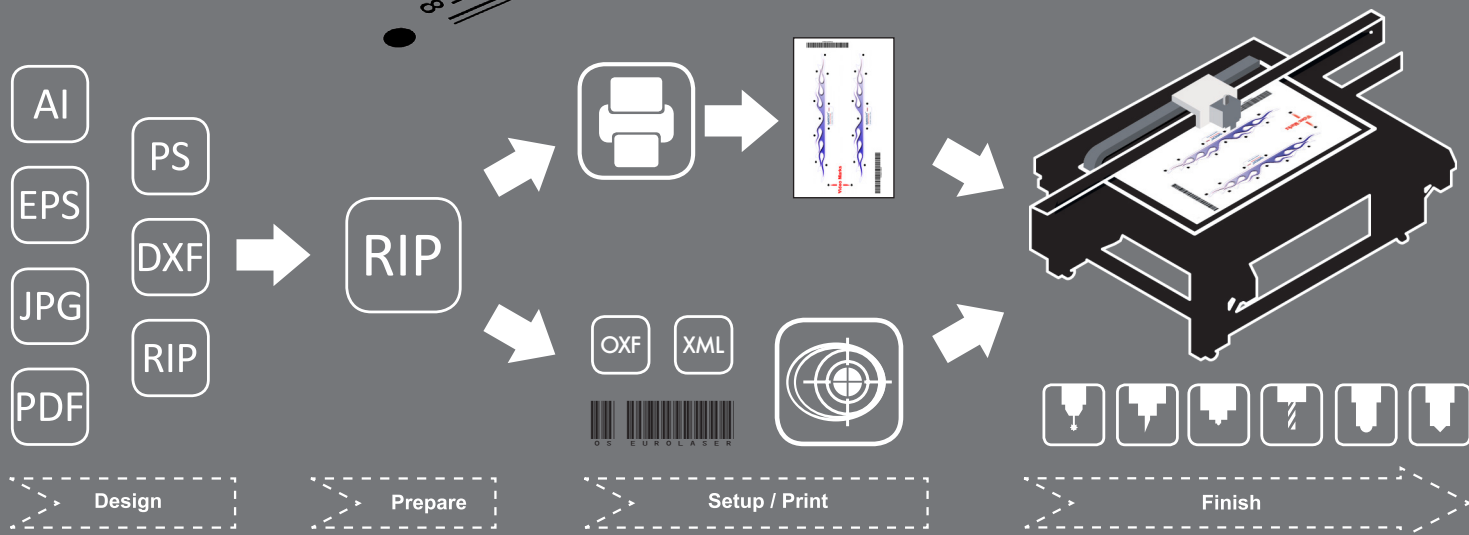
### Barcode Workflow

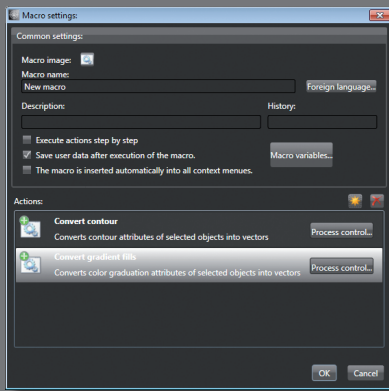
Finishing software must be workflow capable. It needs to have automatic interfaces to existing design- and RIP software packages. In OptiScout software this automatic data transfers is done using the OXF or XML file format. This file format contains cut-contour, video-marks and barcode data.



OptiScout's Workflow Manager is a graphical interface in which working processes can be defined and automated. All output related functions are arranged in a clear structure. Files can be read by barcode scanner and linked with pre-defined output profiles. The complexity of tasks and processes is significantly reduced and as a result production time is minimized.

### Optimized Print & Cut Workflow





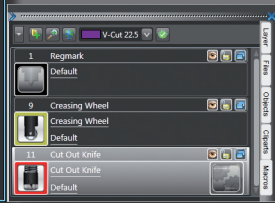
## New Macro Editor / Quick Layer

With the integrated macro editor, automated processes can be made.

The information contained in a list of functions can be arranged into macros.

Macros can be generated and edited by the user itself or by your software supplier.

OptiScout's Quick Layer feature allows fast material- and tool selection. Modifications and output sequences can be easily set up.

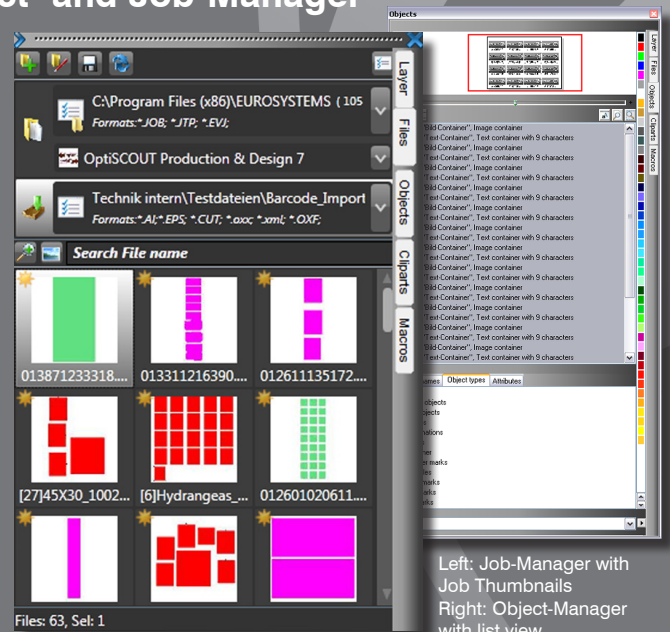


Left: Macro editor | Right: OS Quick Layer

## Improved Object- and Job-Manager

The Job-Manager allows the rapid file search in selected folders. The result of the search can be displayed either as a preview image, a so called thumbnail or as a list with detailed file information. Its Job-Manager also provides the ability to manage hot folders. These hot folders can be pre-set with file operations, which are then automatically applied to all files within such a folder.

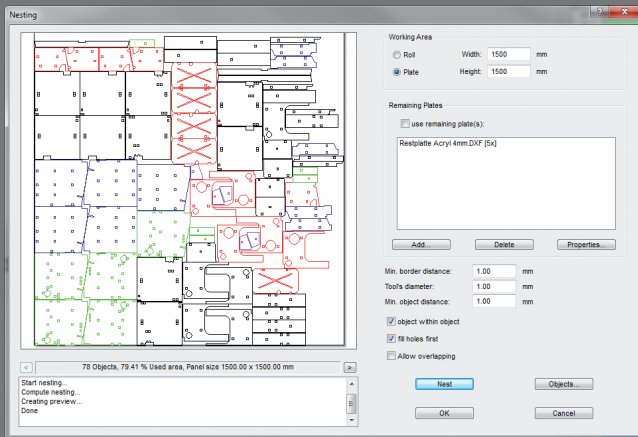
In conjunction with the new macro function, processes can be fully automated. The Object-Manager provides easy access to all the objects on the desktop - it simplifies the preparation of complex jobs.



Left: Job-Manager with Job Thumbnails  
Right: Object-Manager with list view

## Improved Nesting Function (Option)

The Nesting module can now import rest plates as a DXF file. Users can use this ability to better balance rest plates or take into account material faults during the nesting process. Enhanced pairing and alignment for each object.



Nesting window with preview

## Additional Features

- Improved import and export filters (e. g. PDF export)
- Video marks are drawn with clearly visible crosshairs
- Touch-screen-capable Workflow-Manager
- Enhanced sorting algorithms with preview
- Revised plug-ins e. g. display of the current contour length
- Integrated Teamviewer support for direct remote maintenance
- Optimized device drivers
- Optimized material database

- Double line detection
- Definable output sequence of cut objects
- Plug-ins for Illustrator, InDesign, CorelDRAW and AutoCAD
- OptiScout is compatible from Windows XP

**EUROSYSTEMS**

sales@eurosystems.lu - Tel. +352 26 74 56 03  
• Euro-Systems S.à.r.l. - 1 Rue Kummert - L-6743 Grevenmacher •

**Autodesk**  
Authorized Developer



**Adobe** Solutions Network  
Developer Program

**COREL** Solution Partner

**msdn**